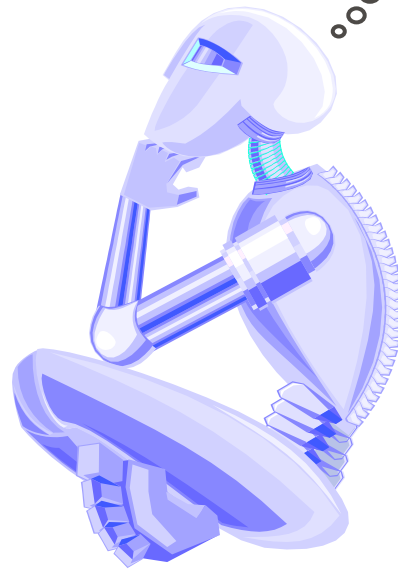


CONCENTRATE ON FRACTIONS

$\frac{1}{2}$ IS EQUAL
TO $\frac{2}{4}$. NOW
WHERE WERE THEY?



Materials

For each pair of students:

Concentrate on Fractions cards

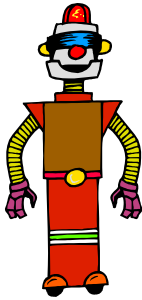
Number of Players

2

Directions

1. Divide the students into pairs.
2. The *Concentrate on Fractions* cards should be turned over and spread out.
3. The tallest student is Player 1.
4. Player 1 will turn over 2 cards. If the cards match, Player 1 keeps them and turns over 2 more cards. If they do not match, Player 1 turns the cards face down in their original position.
5. Player 2 continues in the same manner.
6. If a player turns over a Bonus Card, it should be put aside until the end of the game.
7. When all cards have been matched, the players should add up his or her total score. Each match equals 1 point.
8. Any Bonus Card that was drawn will be added to the total score according to the amount on the card.
9. The winner is the player with the most points.

CONCENTRATE ON FRACTIONS

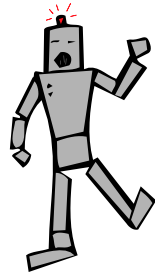


**BONUS
CARD!**

Add 3 points
to your
total score

**BONUS
CARD!**

Add 2 points
to your
total score

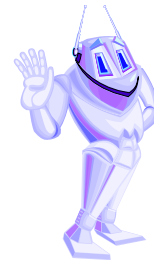


**BONUS
CARD!**

Add 1 point
to your
total score

**BONUS
CARD!**

Add 1 point
to your
total score



CONCENTRATE ON FRACTIONS



CONCENTRATE ON FRACTIONS



