

# RATIO RUNWAY

## Materials

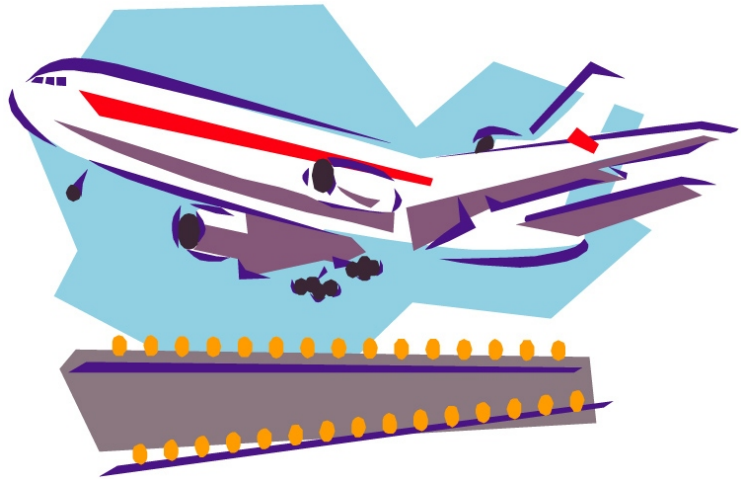
For each group of four students:

*Ratio Runway* game board

*Ratio Runway* cards

*Ratio Runway* spinner

4 game tokens (different colors)

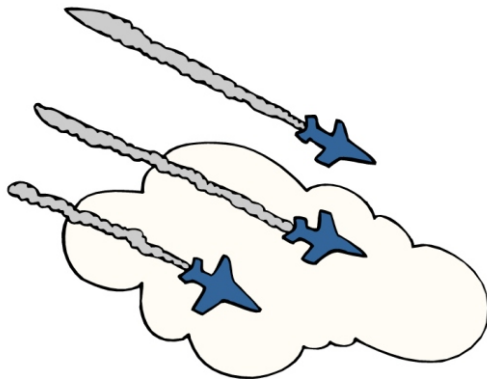


## Number of Players

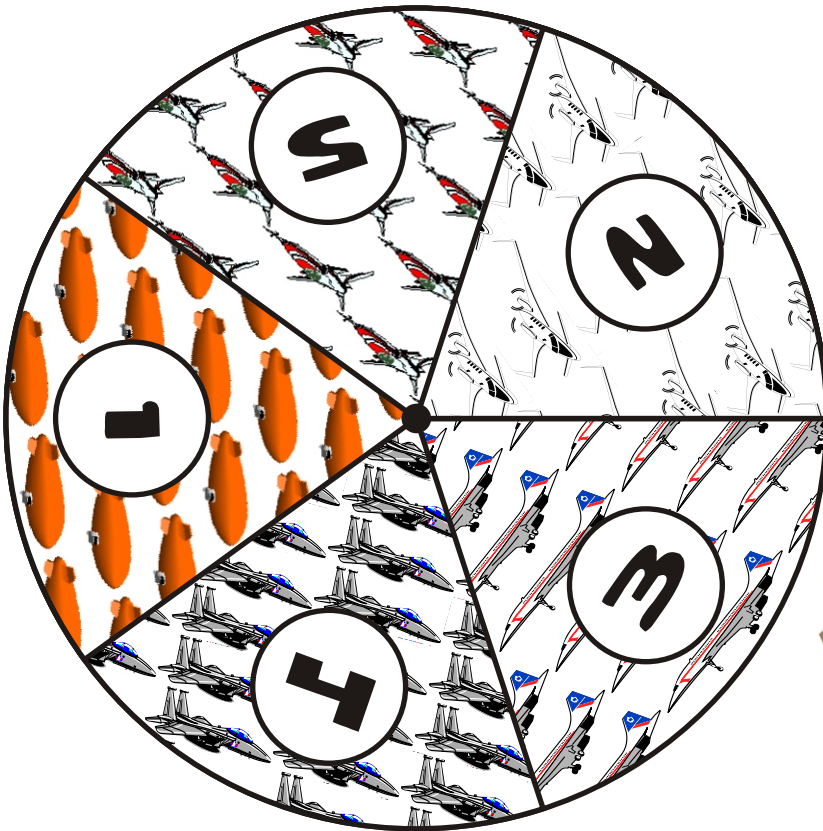
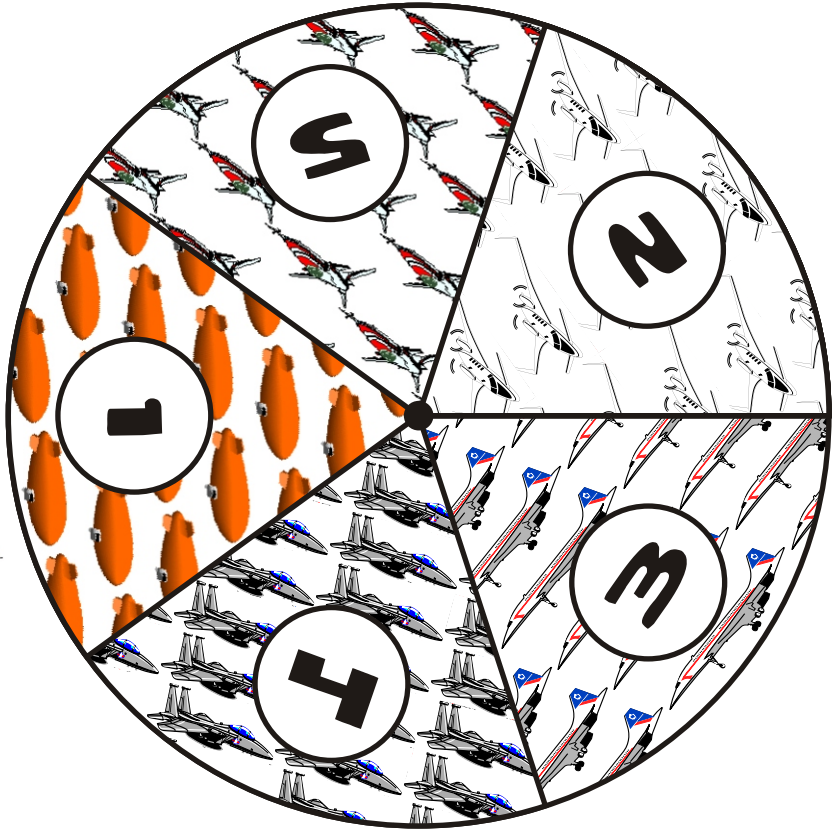
4

## Directions

1. Divide the students into groups of four.
2. Each player places his or her game token at start on the game board.
3. The cards should be shuffled and placed problem side up (answer side down) between the students.
4. Each student spins the spinner. The student who lands on the highest number will begin first. Players continue playing in a clockwise manner.
5. For the first move, Player 1 draws a *Ratio Runway* card from the pile and solves the problem. If his or her answer matches the correct answer on the other side of the card, Player 1 spins the spinner and moves that number of spaces on the game board. If an incorrect answer is given then Player 1's turn is over.
6. Play continues in this manner until a player reaches or goes past the airport.
7. The first player to reach or pass the airport wins.



# RATIO RUNWAY SPINNER



# RATIO RUNWAY SPINNER



IN JOHN'S NEIGHBORHOOD THERE ARE 15 CATS AND 20 DOGS. WHAT IS THE RATIO OF CATS TO DOGS?

- 4 : 3
- 3 : 6
- 3 : 4

THE RATIO OF BOYS TO GIRLS IN CARL'S 7TH GRADE IS ABOUT 3 TO 4. IF THERE WERE 64 GIRLS, ABOUT HOW MANY BOYS WOULD THERE BE IN 7TH GRADE?

- 30
- 32
- 48

THERE WERE 16 GIRLS AND 28 BOYS AT THE MOVIE THEATER. WHICH RATIO COMPARES THE NUMBER OF GIRLS TO BOYS?

- 4 TO 7
- 2 TO 3
- 1 TO 2

MONICA PRACTICES THE PIANO 90 MINUTES A DAY. IF SHE CONTINUES AT THIS RATE, HOW MANY HOURS WILL SHE PRACTICE IN 8 DAYS?

- 12
- 11
- 10

IF THE RATIO OF DANNY'S BASEBALL CARDS TO HIS FOOTBALL CARDS IS 2 TO 3, WHICH OF THESE SHOW POSSIBLE NUMBERS OF THE BASEBALL AND FOOTBALL CARDS?

- 7 TO 14
- 14 TO 20
- 14 TO 21

THE RATIO OF WALKERS TO CAR RIDERS IN BETH'S CLASS IS 2 TO 3. IF THERE WERE 12 WALKERS, HOW MANY CAR RIDERS WOULD THERE BE IN BETH'S CLASS?

- 15
- 18
- 21







IF THE RATIO OF PENS TO PENCILS IN MRS. BROWN'S SUPPLY BOX IS 3 TO 2, WHICH OF THESE SHOW POSSIBLE NUMBERS OF THE PENS AND PENCILS IN THE BOX?

- 18 PENS, 12 PENCILS
- 12 PENS, 18 PENCILS
- 6 PENS, 9 PENCILS

MARILYN HELPED WRITE THANK YOU NOTES FOR HER MOM. SHE WROTE 3 CARDS IN 5 MINUTES. IF SHE CONTINUES AT THIS RATE, HOW MANY CARDS COULD SHE WRITE IN 30 MINUTES?

- 15
- 18
- 32

THERE ARE 24 STRIPED FISH AND 12 SOLID COLORED FISH IN THE FISH TANK. WHICH RATIO COMPARES THE STRIPED FISH TO THE SOLID FISH?

- 6 : 1
- 4 : 1
- 2 : 1

MR. RAMIREZ DREW 15 TRIANGLES AND 9 CIRCLES ON THE CHALKBOARD. WHAT IS THE RATIO OF TRIANGLES TO CIRCLES?

- 4 : 3
- 5 : 3
- 7 : 3

TOM'S DOG JANIE DRINKS ABOUT 3 BOWLS OF WATER A DAY. IF SHE CONTINUES AT THIS RATE, ABOUT HOW MANY BOWLS OF WATER WILL SHE DRINK IN 4 WEEKS?

- 21
- 64
- 84

THERE ARE 16 DUCKS AND 14 GEESE AT THE LAKE. WHICH RATIO COMPARES THE DUCKS TO THE GEESE?

- 8 TO 7
- 7 TO 8
- 7 TO 6



18

18  
PENS,  
12  
PENCILS

5 : 3

2 : 1

8 TO 7

84

MARIO HAS A BAG OF 9 BLUE MARBLES AND 21 GREEN MARBLES. WHICH RATIO COMPARES THE BLUE MARBLES TO GREEN MARBLES?

- 6 : 7
- 7 : 3
- 3 : 7

THE RATIO OF BLUE BACKPACKS TO BLACK BACKPACKS IS 3 TO 5. IF THERE WERE 35 BLACK BACKPACKS, HOW MANY BLUE BACKPACKS WOULD THERE BE?

- 21
- 24
- 27

GREG'S SOCK DRAWER HAS 6 BLUE PAIRS OF SOCKS AND 4 BLACK PAIRS OF SOCKS. WHICH RATIO COMPARES THE BLUE SOCKS TO THE BLACK SOCKS?

- 2 : 1
- 3 : 4
- 3 : 2

JULIO COLLECTED COINS IN A LARGE JAR. THE RATIO OF PENNIES TO NICKELS WAS 4 TO 3. WHICH OF THESE SHOWS THE POSSIBLE NUMBER OF PENNIES AND NICKELS THAT WERE IN THE JAR?

- 16 PENNIES, 12 NICKELS
- 16 PENNIES, 9 NICKELS
- 9 PENNIES, 16 NICKELS

THE RATIO OF MATH BOOKS TO SCIENCE BOOKS THAT WERE TURNED IN AT THE END OF THE YEAR WAS 3 TO 2. IF 54 MATH BOOKS WERE TURNED IN, ABOUT HOW MANY SCIENCE BOOKS WERE TURNED IN?

- 36
- 38
- 40

MARIO'S MOM MADE 3 DOZEN TUNA SANDWICHES AND 1 1/2 DOZEN HAM SANDWICHES. WHAT IS THE RATIO OF TUNA SANDWICHES TO HAM SANDWICHES?

- 1 TO 2
- 3 TO 1
- 2 TO 1





EDUARDO IS ADDRESSING ENVELOPES FOR HIS DAD'S BUSINESS. HE CAN ADDRESS 15 ENVELOPES IN 5 MINUTES. IF HE CONTINUES AT THIS RATE, HOW MANY ENVELOPES CAN HE ADDRESS IN ONE HOUR?

- 75
- 135
- 180

MR. LEE HAS 56 PACKS OF GRAPE GUM AND 49 PACKS OF CHERRY GUM IN HIS STORE. WHAT IS THE RATIO OF GRAPE GUM TO CHERRY GUM?

- 4 TO 7
- 8 TO 7
- 9 TO 7

IF THE RATIO OF BLONDE GIRLS TO BRUNETTE GIRLS IN THE SIXTH GRADE CLASS IS 2 TO 5, WHICH OF THESE SHOWS THE POSSIBLE NUMBERS OF BLONDE GIRLS AND BRUNETTE GIRLS IN SIXTH GRADE?

- 22 BLONDE, 60 BRUNETTE
- 22 BLONDE, 50 BRUNETTE
- 24 BLONDE, 60 BRUNETTE

CHRIS AND HER FRIENDS ARE WASHING CARS TO RAISE MONEY. THEY CAN WASH 1 CAR IN 15 MINUTES. IF THEY CONTINUE AT THIS RATE, HOW MANY CARS CAN THEY WASH IN 6 HOURS?

- 30
- 24
- 21

MRS. GARCIA CHECKED OUT 16 NON-FICTION BOOKS AND 32 FICTION BOOKS FOR HER CLASS TO READ. WHAT IS THE RATIO OF NON-FICTION BOOKS TO FICTION BOOKS?

- 1 : 3
- 1 : 2
- 2 : 3

RAUL COUNTED 14 FOOTBALLS AND 21 BASEBALLS IN THE TOY STORE. WHAT IS THE RATIO OF FOOTBALLS TO BASEBALLS?

- 3 : 2
- 2 : 3
- 2 : 5







THE RATIO OF STUDENTS PLAYING BASEBALL TO KICKBALL DURING P.E. WAS 3 TO 4. WHICH OF THESE SHOWS POSSIBLE NUMBERS OF STUDENTS WHO PLAYED BASEBALL AND KICKBALL?

- 24 BASEBALL, 30 KICKBALL
- 24 BASEBALL, 32 KICKBALL
- 32 BASEBALL, 24 KICKBALL

THE RATIO OF VANILLA TO CHOCOLATE ICE CREAM BARS SOLD AT THE SCHOOL CARNIVAL WAS 2 TO 5. IF 125 CHOCOLATE ICE CREAM BARS WERE SOLD, HOW MANY VANILLA ICE CREAM BARS WERE SOLD?

- 100
- 75
- 50

MRS. SMITH BROUGHT ALL OF HER GAMES TO SCHOOL. SHE HAS 9 READING GAMES AND 12 MATH GAMES. WHAT IS THE RATIO OF READING GAMES TO MATH GAMES?

- 3 : 4
- 3 : 5
- 1 : 2

SO FAR CHAN HAS WON 8 BASKETBALL GAMES AND HAS LOST 2. WHAT IS THE RATIO OF WON GAMES TO LOST GAMES?

- 2 TO 4
- 4 TO 2
- 4 TO 1

THE SWIM TEAM CONSISTS OF 12 BOYS AND 10 GIRLS. WHAT IS THE RATIO OF BOYS TO GIRLS?

- 6 : 5
- 5 : 6
- 5 : 4

18 BOYS AND 24 GIRLS FROM AMI'S SCHOOL ATTENDED THE LOCAL CARNIVAL. WHAT IS THE RATIO OF BOYS TO GIRLS WHO ATTENDED THE CARNIVAL?

- 4 TO 5
- 4 TO 3
- 3 TO 4





THIS YEAR JULIE'S MOM RECEIVED 28 CHRISTMAS CARDS. LAST YEAR SHE RECEIVED 36 CHRISTMAS CARDS. WHAT IS THE RATIO OF THE NUMBER OF CHRISTMAS CARDS SHE RECEIVED THIS YEAR COMPARED TO LAST YEAR?

- 6 TO 7
- 9 TO 7
- 7 TO 9

THE RATIO OF COUNTRY SONGS TO ROCK SONGS ON ANNA'S MP3 PLAYER IS 4 TO 7. WHICH OF THESE SHOWS THE POSSIBLE NUMBER OF COUNTRY AND ROCK SONGS THAT ARE ON ANNA'S MP3 PLAYER?

- 30 COUNTRY, 70 ROCK
- 36 COUNTRY, 56 ROCK
- 32 COUNTRY, 56 ROCK

THE SNOW CONE MACHINE WAS BROUGHT TO FIELD DAY. IT MADE 72 CHERRY AND 63 GRAPE SNOW CONES. WHAT IS THE RATIO OF CHERRY SNOW CONES MADE COMPARED TO GRAPE SNOW CONES MADE?

- 7 : 6
- 7 : 8
- 8 : 7

9 OUT OF 21 STUDENTS IN MARIO'S CLASS KNOW HOW TO SWIM. WHAT IS THE RATIO OF STUDENTS WHO KNOW HOW TO SWIM COMPARED TO THE STUDENTS WHO DO NOT KNOW HOW TO SWIM?

- 3 TO 21
- 3 TO 4
- 4 TO 3

EACH CLASSROOM IN JAROD'S NEW SCHOOL HAS 4 COMPUTERS. THERE ARE 22 COMPUTERS IN THE LAB AS WELL. WHICH RATIO ACCURATELY COMPARES THE NUMBER OF COMPUTERS IN JAROD'S CLASSROOM TO THE NUMBER OF COMPUTERS IN THE LAB?

- 2 TO 10
- 2 TO 11
- 2 TO 22

40 STUDENTS RIDE BIKES TO SCHOOL AND 36 WALK TO SCHOOL IN 6TH GRADE. WHAT IS THE RATIO OF BIKE RIDERS COMPARED TO WALKERS?

- 10 : 9
- 9 : 10
- 9 : 11





32

COUNTRY,

56  
ROCK

7 TO 9

3 TO 4

8 : 7

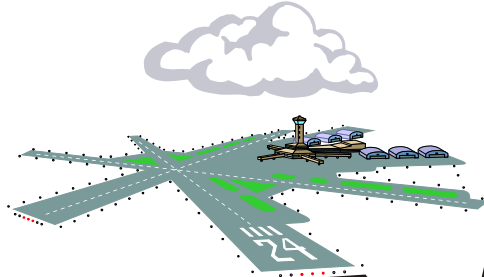
10 : 9

2 TO 11

# RATIO RUNWAY



**START**



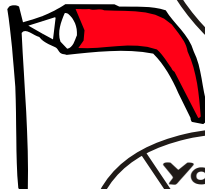
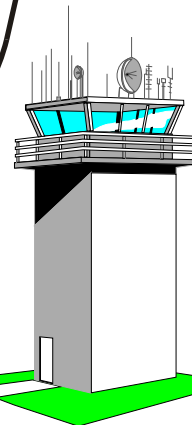
**TAILWIND!**

**MOVE UP 2 OR EACH OPPONENT BACK 1**

**WRONG ALTITUDE!**

**GO BACK 3**

**LANDING GEAR NOT DOWN!**  
**GO BACK 1**



**YOU'RE ON THE GLIDESLOPE!**

**MOVE UP 1**

**AFTERBURNER ON!**

**MOVE UP 2 SPACES**

**STORM!**



**LOSE A TURN**

